

304 Series™

Parking Structure Luminaire – Mounting O - PR (Type III Medium)

Product Description

Cree 304 Series is a highly versatile fixture which adapts to a wide range of applications: from gas station forecourt canopies, to industrial installations and tunnel lighting. The mounting system allows for extremely rapid and simple ceiling installation. Luminaire is constructed from rugged die cast and extruded aluminum components. LED driver is mounted in a sealed weathertight center chamber that allows for access from below the luminaire.

High performance aluminum heat sinks specifically designed for LED parking structure application. Mounting brackets designed to mount directly over existing flat ceilings for direct mount.

Performance Summary

Utilizes BetaLED® Technology

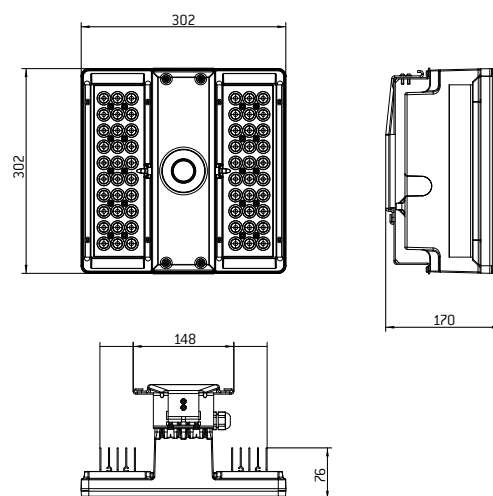
Patented NanoOptic® Product Technology

CRI: Minimum 70 CRI

CCT: 5700K (+/- 500K) Standard, 4000K (+/- 300K)

Limited Warranty†:

10 years on luminaire / 10 years on Colorfast DeltaGuard® finish



Ordering Information

Example: 30XPR004E43DWHI5

30	X	PR	O	04	E	43	WH	I5
Product	Insulation Class	Optic	Mounting	LED count x 10	GEN	Options	Color Options	Drive Current
30	x Class 1	PR Type III Medium	O Fixed ceiling mounting system	04 06	E	no code 5700K 43 4000K Color Temperature - Color temperature per luminaire D 1-10V Dimming - Control by others - Refer to dimming spec sheet for availability and additional information - Can't exceed specified drive current K# Light Control with Occupancy Sensor - Flux dimming control with occupancy sensor E Light Control with Occupancy Sensor with remote control - Flux dimming control with occupancy sensor with remote control N# Reprogrammable Virtual Midnight - Reprogrammable 2 levels option with virtual midnight	WH White (Standard) SV Silver BK Black BZ Bronze SB Silver Bronze	no code 700mA I5 525 mA I3 350 mA

† See www.cree-europe.com for warranty terms



Rev. Date: 11 April 2014



www.cree-europe.com

Ph. +39 055 343081 Fax +39 055 34308200

Parking Structure Luminaire – Mounting O - PR (Type III Medium)

Product Specifications

CONSTRUCTION & MATERIALS

- Constructed from rugged die cast and extruded aluminum components
- LED driver is mounted in a sealed weathertight center chamber that allows for access from below the luminaire
- High performance heat sinks specifically designed for LED parking structure application
- Mounting bracket is designed to mount directly over existing flat ceilings for direct mount
- Exclusive Colorfast DeltaGuard® finish features an E-Coat epoxy primer with an ultra-durable powder topcoat, providing excellent resistance to corrosion, ultraviolet degradation and abrasion. Available colours are White, Silver, Silver Bronze, Bronze and Black

ELECTRICAL SYSTEM

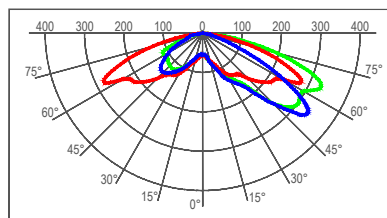
- Input Voltage:** 220-240V, 50/60Hz
- Power Factor:** > 0.9 at full load
- Total Harmonic Distortion:** < 20% at full load
- Integral 10kV surge suppression protection standard
- To address inrush current, slow blow fuse or type C / D breaker should be used

REGULATORY & VOLUNTARY QUALIFICATIONS

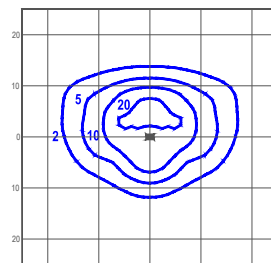
- CE / ENEC Listed
- Enclosure rated IP66 per IEC 60529
- 10kV surge suppression protection tested in accordance with IEEE /ANSI C62.41.2
- Luminaire and finish endurance tested to withstand 5,000 hours of elevated ambient salt fog conditions as defined in ASTM Standard B 117
- RoHS Compliant

Photometry

All published luminaire photometric testing performed to IESNA LM-79-08 standards by a NVLAP certified laboratory.



cd/klm
 — C0 - C180 — C90 - C270 — C35 - C215



lux

Test Report #: CESTL-2013-0068

30XPR004E43
Mounting Height: 6m
Initial Delivered Lumens: 6953

IES Files

To obtain an IES file specific to your project, please consult www.cree-europe.com

Weight

LED Count (x10)	Weight
04	8 Kg
06	

Lumen Output, Electrical, and Lumen Maintenance Data

Effective Flux (lm) - PR (Type III Medium) Distribution						
LED Count (x10)	5700K	4000K	System Watts 220-240V	Total Current (A)	50K Hours Projected Lumen Maintenance Factor @ 15° C (59° F)	L ₇₀ Life* (hours)
	Delivered Lumens	Delivered Lumens		230V		
350mA @ 25° C (77° F)					94%	>150000
04	3927	3810	46	0.21		
06	5891	5715	66	0.31		
525mA @ 25° C (77° F)					93%	149000
04	5655	5486	70	0.30		
06	8483	8230	99	0.45		
700mA @ 25° C (77° F)					91%	129000
04	7167	6953	91	0.40		
06	10751	10430	132	0.60		

* Based on fixture operating at 25° C